

mdf italia



© COPYRIGHT 2020 MDF ITALIA SRL SOCIETA' UNIPERSONALE

2016-2019

TENSE MATERIAL WOOD

Designed by Piergiorgio Cazzaniga, Michele Cazzaniga

“A smart beauty, resulting from a thought and a know-how capable of transmitting a deep emotion through a wise accentuation of the peculiarities of the materials used”. Piergiorgio Cazzaniga describes in this way Tense Material, a collection of tables available in 5 heights and 36 sizes, capable of achieving large dimensions, up to 4 meter long, always keeping a perfect top tension.

Different wood grain combinations, various shades and emotions to be touched. Tense Material is available in three different wood essences: natural oak, carbonized oak and national walnut.

NATURAL OAK highlights wood grains and unveils time passing by, enhancing its beauty. The natural, wrinkled surface, is not just a visual experience, but also a tactile one. Every table is different from another, so every single product takes on a unique personality. This Tense Material's finish brings warmth into the living room and fits into every context and furnishing style.

Inspired to the Japanese technique, Tense CARBON starts from an oak base. By using natural acids a “burned” effect on the surface is got. Thus, wood looks black with intense and fully natural shades, that are unique and not replicable.

Tense Material FINE WOOD IN NATIONAL WALNUT combines wood durability and resistance with elegance and lightweight, that are typical features of the collection. The smooth surface features warm and intense colours, with endless shades enhancing wood features. Tense Material Fine Wood perfectly fits into classical contexts, but it also stands out in contemporary spaces.

The possibility to insert the CABLE COMPARTMENT DOOR and its large size make Tense Material suitable for workplaces, where meetings are so many and the need of accommodating more people around the table is frequent.

[EXPLORE THE WHOLE TENSE COLLECTION](#)

FRAME AND TABLETOPS

Tables featuring mono-material finishes.

The important technological innovation it incorporates, combined with the tensioning capacity of the components makes it possible to build tabletops in large sizes.

The 35mm thick tabletop is a load-bearing composite board built with an internal frame consisting of either aluminium profiles and polystyrene filler, except for the brass top which has an acrylic resin honeycomb filling and two outer layers of aluminium. 35x35mm steel legs with internal structural tie-rod.

The reduction of the maximum sizes of the Italian walnut version (up to D120 x L300) represents the technical limits of the materials employed to build the tabletops.

OAK WOOD AND CARBONIZED WOOD

Solid natural oak, 3 mm thickness, obtained from sustainable forests and subjected to biothermal treatment through the combined use of heat and steam, without the addition of chemicals. The wood retains its original beauty while the heat treatment changes its colour without using colouring agents, chemical dyes or harmful substances, resulting in totally natural, unique, irreplaceable hues.

Natural oak wood with transparent acrylic finish.

In the carbonized wood, the characteristic "black carbonised" effect is obtained by applying a natural acid to the surface.

FINE WOOD | Italian walnut

Solid Italian walnut, 2 mm thickness, obtained from sustainable forests and finely sanded into variously sized slats. This type of processing technique enhances the natural characteristics of the wood, granting the material different shades. Any visible design irregularities should be regarded as signs of quality and authenticity.

Transparent acrylic finish. The edges and legs are covered in 2 mm-thick cut walnut, processed with a sawed effect (series of irregular cuts of different depths).

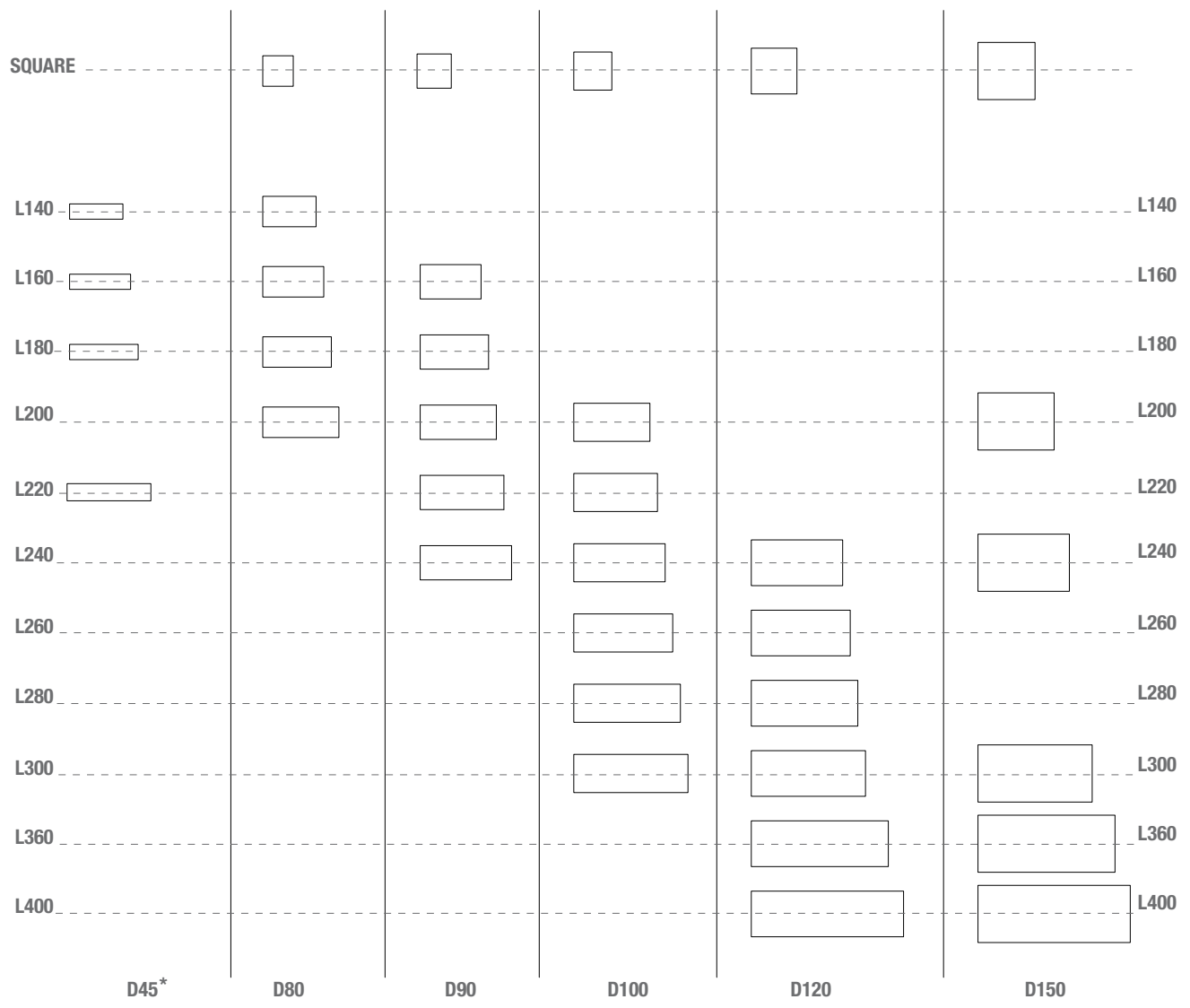
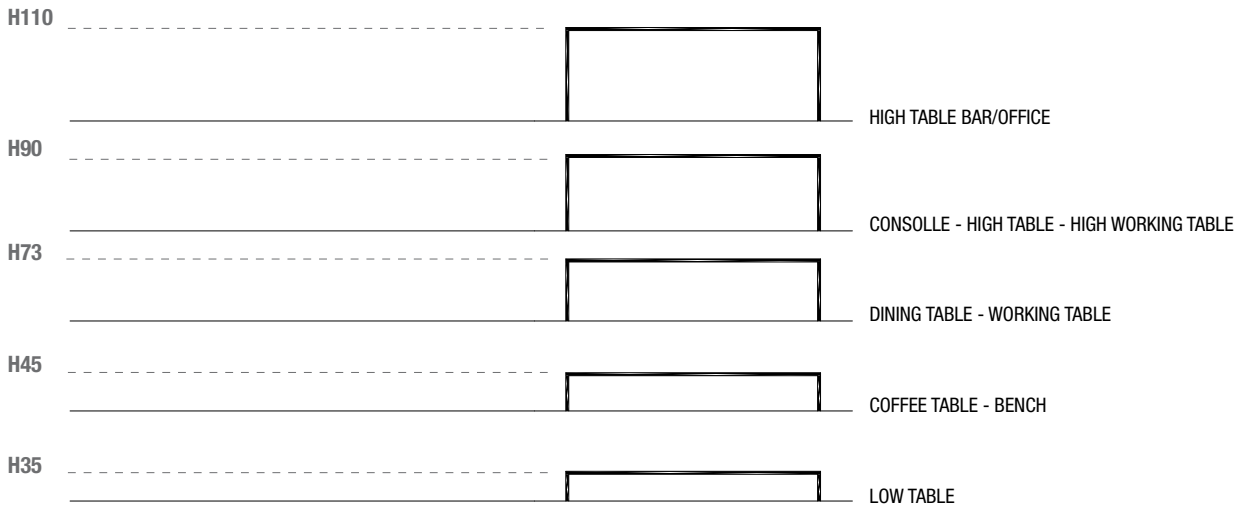
The natural surface in variously sized slats is characterised by different shades which enhance the natural features of the wood and raw materials.

ACCESSORIES

The table is also available in a version equipped with 1 or 2 openings and an undertop tray.

The openings in size 350 or 420 mm are in aluminium matt black painted.

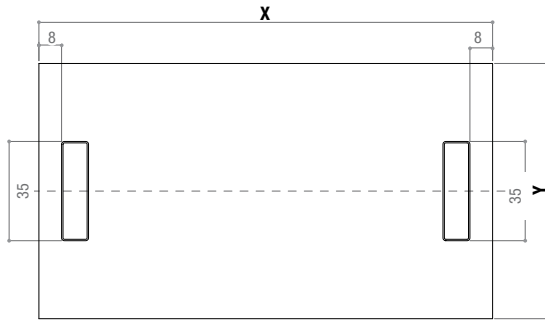
DIMENSIONS



CABLE MANAGEMENT DOOR POSITION

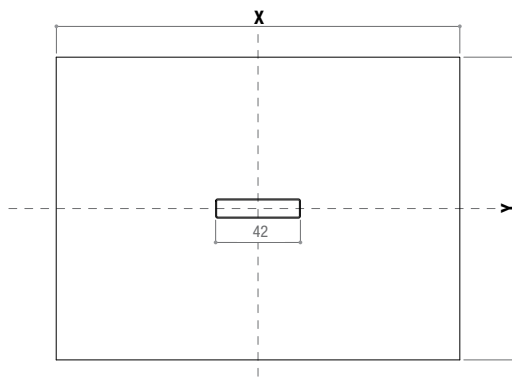
with one or two lateral openings for cable management in size 35 cm

X (cm)	Y (cm)
160	90
180	90
200	90
220	90
200	100
220	100



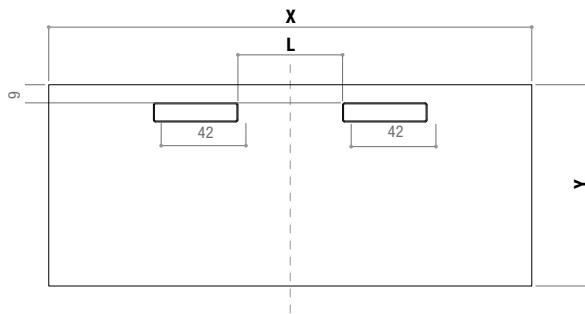
with one central opening for cable management in size 42 cm

X (cm)	Y (cm)
150	150
200	150
240	150



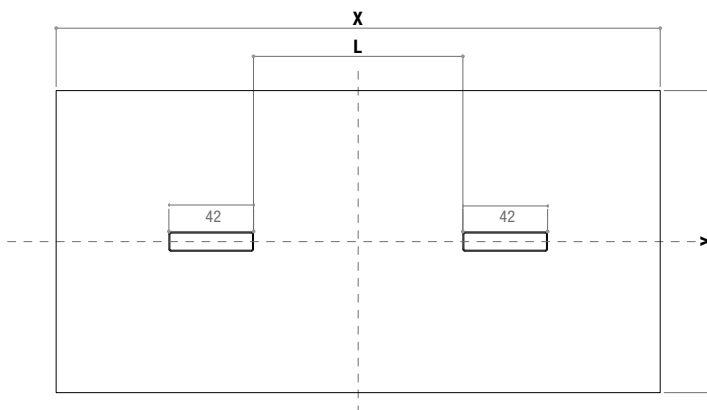
with two front openings for cable management in size 42 cm

X (cm)	Y (cm)	L (cm)
240	90	52
240	100	52
260	100	64
280	100	84
300	100	104
240	120	52
260	120	64
280	120	84
300	120	104
360	120	164
400	120	116



with two central openings for cable management in size 42 cm

X (cm)	Y (cm)	L (cm)
240	120	52
260	120	64
280	120	84
300	120	104
360	120	164
400	120	116
300	150	104
360	150	164
400	150	116



Finishing

The number in the dot corresponds to the number of colour/material finish.

Here below, in the section FINISH OPTIONS, please note all the colours of the materials used for this product.

TABLE

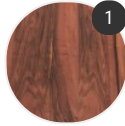
Top/Structure



Wood



Carbone



Fine Wood

Finish options

TOP/STRUCTURE

Wood



Wood X085

Carbone



Carbonised
wood X094

Fine Wood



Fine wood,
Italian walnut
X119